



Varaaz Arts
EXPERIENCE YOUR MANDALA

“Symphony of Circles”

INDIA'S BIGGEST CURATED SACRED GEOMETRY MANDALA ART SHOW





Varaaz Arts
EXPERIENCE YOUR MANDALA

“Symphony of Circles”

"Symphony of Circle" is not just a coffee table book; it is a gateway to a world where art and spirituality converge. Varalakshmi sacred geometry mandalas invite readers to contemplate the interconnectedness of all things, fostering a sense of harmony and unity. This collection is a testament to the timeless beauty and profound wisdom encapsulated in the delicate balance of shapes, patterns, and colours within each mandala.

ACKNOWLEDGEMENTS

In a big world of grace, gratitude, and help, A small word of 'Thanks' creates a huge impact! Editions of Varaaz Art Show have taken me through depths of research and the lengths of Mandala discovery. Sacred geometry and the 5 feet mandala creation is one of the top most features of this show, with the Wonder Book of Record title-Biggest hand drawn Sacred Geometry Mandala.

Here I take pen and paper to thank all those who have been pillars in making this happen!

Thanking is a Beautiful Art of Life...

My Parents, and especially Nature - have encouraged me from the start of my career as an artist till date and have been inspiring me to succeed.

My Life Partner - Bharanidharan, understood my talent and has been my very inspiring, and supportive pal through this beautiful voyage. His perspective on living life and caring has given me a new dimension to achieve whatever I am.....

My little champ: 'Arjun' who was the start-point for my work on Mandalas and travels with me on my works!

Many of my friends and well-wishers who have become my followers, and my students and been around to give their upright reviews on my works over 10 the years.

With Love,
Varalakshmi Bharanidharan



Step into the mesmerising world of sacred geometry through the intricate and captivating mandala artworks. This coffee table book, "Harmony Unveiled," is a visual journey that explores the profound beauty and symbolic depth of sacred geometry as interpreted by a masterful artist. Each mandala within these pages is a testament to the artist's skillfull craftsmanship and spiritual insight, inviting readers to delve into the hidden mysteries of form, proportion, and interconnectedness.

Here is a Mandala Art form with a difference that showcases its true and unique facets!

Mandala Art incorporating Sacred Geometry

Mandala art is about circles and symbolises cosmic, spiritual sense of self and Universe, which evolves to oneness and revolves around a centre which is the source of creation.

Sacred Geometry is all about the concept that some shapes and forms form the fundamental templates for life in the Universe.

In combination, Mandala and Sacred Geometry forms a potent blend of art with an intuitive and imaginative expression.

Varaaz Arts has exhibits, that incorporate the true elements of traditional Mandala and infused the concepts of Sacred Geometry. The result is a truly stunning array of paintings that have deeper meanings and connect to energies as well as the Universe than our casual senses would imply.

Sacred geometry Mandala art portrays the vastness of the universe and the essence of our being. Through concentric shapes and vibrant colours, these artworks represent the physical, psychological, and spiritual aspects of existence. They are intuitively created, embodying the principles and patterns of Mandala art. They hold the power to infuse your interior decor with profound meaning.



Creating a Sacred Geometry Mandala is an enriching practice that enhances cognitive skills, expands knowledge of shapes and colours, and fosters emotional well-being. It provides a profound experience of circular harmony while developing coordination and psychomotor skills in perfect balance.

A classic 5 feet Sacred Geometry Mandala, Conceptualised artwork created using music frequencies, themes and life force emanating from the centre, Signature Mandala works that project water and fire, red mud theory as well as philosophy are all major attractions of the show. This is a must-visit-and-watch-art-show!

SACRED GEOMETRY

Thus, your understanding will start forming!

Further to this, the artists aim to hold workshops, classes for different age groups so as to spread this beautiful art form to bring about a sense of purpose to the people and the Universe at large.



ABOUT THE ARTIST

VARALAKSHMI BHARANIDHARAN

“My INSPIRATION, 'Peace, is so un-materialistic in nature, but every living being strives to achieve it in one form or another. I have always had a craze to do things differently, and this inspired my interest in Mandala Arts. With around a decade of experience and the completion of a course in Fine Arts (BFA) from Bharati Kala Kendra, Lucknow, in the year 2015, and as an Art counsellor, there is no looking back. Today, I have 1000 plus creations to my credit and have rich expertise in Conceptual Mandala Arts, infusing sacred geometry. All my creations are hand-drawn, hand-painted, and mostly pen, pencil, and canvas works, with some monochromatic Mandalas in the same series using watercolour and pen.”



Why I choose MANDALA ART?

I love art and wanted to stand unique and give a strong message through my work and nothing better than Conceptual Mandala arts could have been my choice. The connotation and magnitude seemed completely unique in this category of art. As this form of art deals with human psychology. I found a more enthusiastic and positive vibe while working on my paintings.

SCIENTIFIC INSIGHT

Geometric shapes or circle art has been an enriching experience. The main idea is to connect with one's own consciousness and find peace amidst all the lingering thoughts. It is one of the best ways to connect with yourself and can lead to higher planes of existence, eventually radiating those positive vibes. Conceptual Mandala art has the capacity to translate complex mathematical expressions into very simple shapes and forms, thereby helping us understand how the basic patterns governing the evolution of emotions in us can work out in the most beautiful way.

CERTIFICATIONS

- ART THERAPIST AND ART COUNSELLOR From California State University & ICPEM
- Mandala Artist with more than 500 completed Mandalas @100mandala.com
- Certified Life Coach in Mandala Art Therapy
- Mandala Researcher



WHAT IS MANDALA?

Mandala represents a circle in Sanskrit language. Mandala is a joint of 2 words "**Manda**" meaning essence and the "**LA**" means container, which translates to container of essence. Mandala signifies that every wave has a centre, around which the action takes place. We can compare the centre to life around which all things revolve. True to its name, Mandala art is all about representation of the cosmos, the Universal energies, the self and the balance within the circle. There is only evolution!

Sacred Geometry is referred to as the "**Art of the Universe**" and is found all through the natural world. It is also one of the very few forms that appeal to and balance the left and the right brains. It is the art and science which connects us to the cosmos. Sacred Geometry reveals the source creation of the universe, and the evidence can be seen in the natural world around us.

Observing Mandalas and in conjunction with Sacred Geometry can give us a deeper understanding and spiritual meaning of the nature and Universe, which in turn aligns the soul and spirit with the universe and helps in developing a greater sense of awareness in yourself as well as in your spiritual practice.

HOW TO OBSERVE THE MANDALAS

Zero - We begin with a history of the same points that are at the center of the Mandala. From there, geometry tells us the story of how shapes take their form. The zero-dimensional point enters the first-dimensional community through the addition of another point to create a line. By adding a third point to the mix, you get 2 dimensions. Things get deep, so to speak, when 4 points come together, creating 3 dimensions. After a tour of the shapes, you would enter the realms of patterns, which will enhance your appreciation of the shapes you just visited.



POINTS IN COMMON

Structured things usually need a centre or a point to organise around. For example, material substances are made up of particles that seem to move around a central nucleus. In conversations, having a main point is crucial; without it, our lives may feel purposeless.

But can we identify the exact point or centre of everything? In physics, when we closely look at tiny particles using powerful magnification, we discover that space is filled with the potential for things to exist.

The basic shapes we infused in our art as follows.



SIGNATURE MANDALA

A Signature Mandala is a unique creation formed using the Akshara Sankhya and Katapayadi numbering system. The process involves converting a name or statement into numbers, compressing them digitally, placing them within a segmented circle, and connecting them to form a visually appealing shape. This personalised approach infuses the Mandala with natural power, making each one distinctive and tailored to the individual or project.



THE ARTIST'S VISION

Explore the creative process as the artist shares insights into their artistic journey and the inspiration behind their sacred geometry mandalas. Learn about the artist's unique approach to blending traditional geometric patterns with contemporary elements, resulting in artworks that are both timeless and avant-garde.

MANDALAS IN INTERIOR SPACES

Witness the transformative power of sacred geometry mandalas in interior design. Through vivid photographs, this chapter showcases how these artworks can elevate the energy and aesthetics of living spaces. From meditation rooms to contemporary homes, Mandalas become focal points, harmonising the environment with their sacred vibrations.

NEED & PURPOSE OF MANDALA ART IN HOME INTERIOR

- Creating Harmonious Spaces
- Balancing Energy
- Thematic Design
- Customization and Personalization
- Personalized Home Decor





NADA SAMSKAR
Artist: Varalakshmi B

Medium: Gouache on Paper
Size: A3

Depiction: This artwork brings the Rama Mantra to life using a special number system. At the center is the mantra surrounded by designs representing the five elements - Earth, Water, Fire, Air, and Space. The atomic patterns show how everything in the universe is connected. The parrots, inspired by Hindu mythology, symbolize communication and spiritual connection.

Suitable Ambience: homes seeking a spiritual touch.



SWAN IN THE QUANTUM

Artist: Varalakshmi B

Medium: Acrylic on Canvas

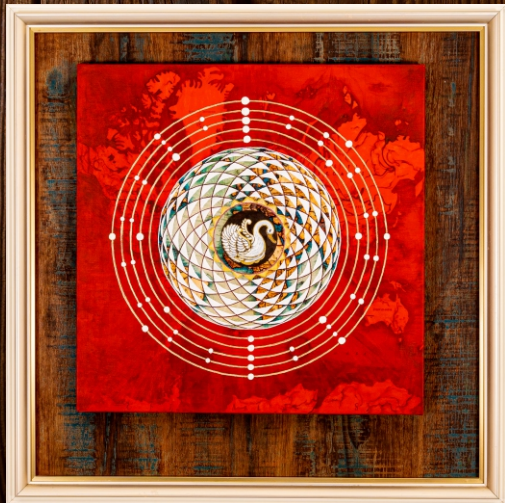
Size: 2ft

Depiction:

Swan: Purity, Grace, Light evolution

Torus: Continuous flow, Energy, Interconnectedness.

Concentric Circles: Xenon Elemental



Suitable Ambiance: Ideal for spaces that encourage reflection and contemplation, yoga studios, or spaces dedicated to scientific exploration and discovery.



AN ODE TO PURITY

Artist: Varalakshmi B

Medium: Acrylic on Canvas

Size: 2ft

Depiction: This Tanjore painting depicts the first verse of the Kanakadhara Stotram, celebrating the divine beauty and grace of Lord Vishnu/Shiva. The Tamala tree symbolizes the Lord's physical form, radiating divinity. Honeybees represent devotees drawn to Sweet nectar, while parrots signify the calming of the mind. The torus reflects the eternal cycle of life, and the Seed of Life conveys divine unity. Lotus flowers embody purity and detachment.



Suitable Ambiance: Perfect for prayer rooms, drawing, spiritual spaces, it brings tranquillity and grace.



TITLE: ETERNAL FLOW

Artist: Varalakshmi B

Medium: Gouache on Paper
Size: A3

Depiction: Eternal Flow is a sacred geometry mandala art piece that explores the interplay between energy, fluidity, and creation. The central void, surrounded by vibrant patterns and a spectrum of colors, signifies the infinite potential of the universe. The orange and blue gradients symbolize the harmonious duality of fire and water, energy and calmness.

Suitable Ambience: It adds a vibrant yet calming presence, connecting viewers to both their energetic and peaceful states.

TITLE: ETERNAL FLOW

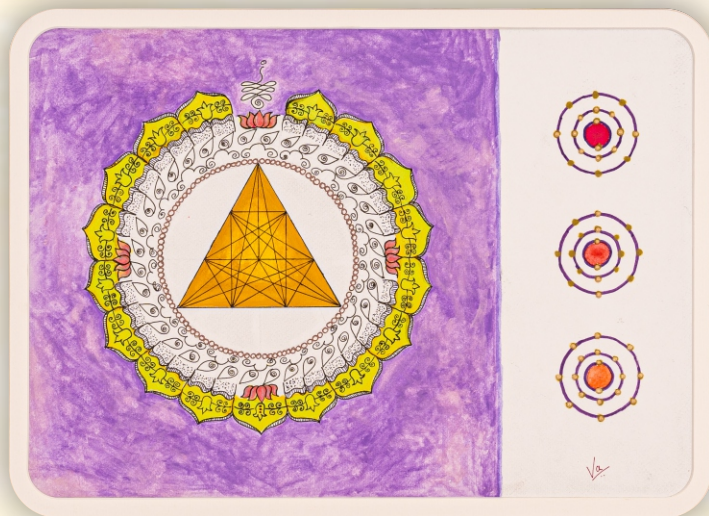
Artist: Varalakshmi B

Medium: Gouache on Paper
Size: A3

Depiction: The central golden triangle, representing stability and wisdom, anchors the composition with its intricate interconnection of lines, reflecting creation, energy, and the foundation of life. To the right, the atomic structures, inspired by Krypton's electron configuration, emphasize elemental forces of nature and the interplay of universal energies. These forms bridge the microcosmic and macrocosmic realities, urging reflection on the interconnectedness of existence.

Suitable Ambience:

This piece is ideal for spaces that inspire contemplation and creativity.





ELLIPTICAL GLORY (Srsti Samya)

Artist: Varalakshmi B

Medium: Gouache on Paper

Size: A1

Description: The Seed of Life represents the birth of the universe, while the Five-Pointed Star embodies harmony in the five elements, and the Seven-Pointed Star symbolizes spiritual awakening. Inspired by the Akshara Sankhya System, the śloka's syllables transform into geometric patterns, weaving a cosmic tale of interconnectedness.

The golden background reflects the infinite cosmos, while vibrant colors depict the essence of life. This mandala invites you to explore the balance of creation and your place in its infinite design.

Suitable Ambiance: Educational Institutions or Workshops, Spiritual Retreat Spaces, Living Rooms or Hallways, Private Study or Office Spaces.





CONCH ZONE

Artist: Varalakshmi B

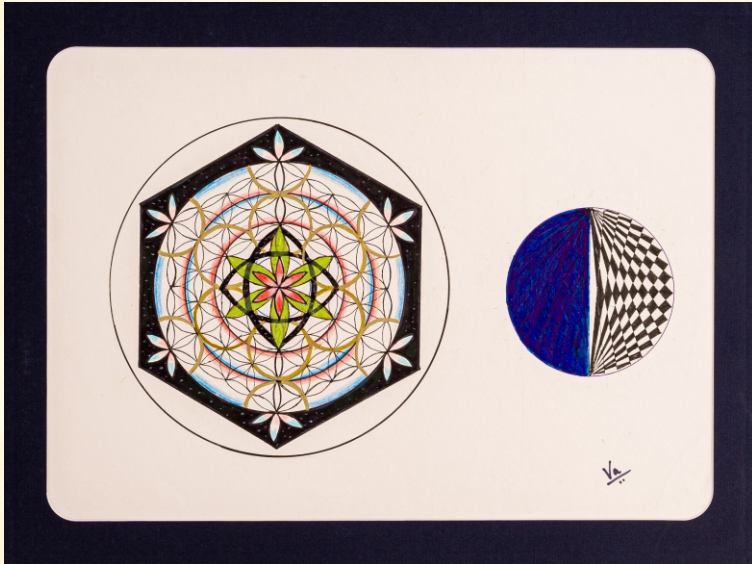
Medium: Watercolor and Ink
on Paper
Size : A3

Description:“Cosmic Vessel” uses a dynamic crescent moon and a detailed mandala to symbolize the journey towards spiritual wholeness. The moon, filled with luminous yellow, represents intuition and inner wisdom, while the mandala signifies the interconnectedness of the universe. The six-pointed star within the mandala represents the union of opposites, and the lotus petals symbolize purity and spiritual growth.

The colour **Blue** depicts Vastness of the cosmos. **Yellow** represents Intuition and spiritual awakening. Gold shows Sacredness and divine energy. **Orange/Red** represent Energy and transformation.

Suitable Ambience:

This piece is ideal for spaces that inspire contemplation and creativity.



Suitable Ambience:
This artwork is best displayed in a serene and contemplative setting. With a pastel wall background.

AN ODE TO PURITY

Artist: Varalakshmi B

Medium: Tanjore Art on Canvas

Size: 2ft x 2ft

Depiction: The journey from chaos to balance. The Flower of life and Illusion sphere together, reflects the transformative shift from illusion to a harmonious existence, inspiring self-awareness and spiritual growth.



Suitable Ambience:
This artwork is ideal for serene spaces, yoga studios, or spiritual retreats.

LIFE OF A LOTUS

Artist: Varalakshmi B

Medium: Gouache on Paper

Size: A3

Depiction: This artwork centers on the lotus, symbolizing purity and enlightenment, surrounded by sacred geometry representing universal connectivity and the five elements. The "Om" chant and abstract patterns evoke cosmic balance and duality. Vibrant colors-pink, green, gold, and blue-embodiment growth, compassion, energy, and tranquility.

ABOUT THE ARTIST

JAYASRI SURESH

I am Jayasri Suresh, a post-graduate in Physics and a dedicated special educator at Madras Dyslexia Association. My passion lies in working with special needs children, guiding them to excel in academics and enrich their skills with patience and compassion.

In my role as a special educator, I continuously strive to adapt innovative techniques and approaches to effectively connect with my students and nurture their growth. Witnessing their progress and accomplishments brings me immense joy and fulfilment.



Beyond the realm of academics, I have a creative soul that finds solace in playing Veena and the art of Sacred Geometry Mandala. Introduced to this therapeutic art form, I found myself captivated and drawn into its meditative world. This newfound passion for Sacred Geometry Mandala art has become an outlet for self-expression and relaxation.

Music has always been my companion since childhood and Veena is my heart and soul now. I have taken part in Veena Mahotsav and the 108 Veena festivals.

As I embark on this journey, I seek to blend my love for art with my expertise in special education, creating an environment where creativity and learning intertwine to empower and uplift those in need.

This show has given an opportunity to connect music and sacred geometry. Join me on this inspiring adventure as I paint the canvas of life with compassion, patience, and the transformative power of Sacred Geometry Mandala art.

Certifications: Basic and Advanced level Sacred Geometry Mandala Art

Art Shows: Participated in the art show 'Sarvam' curated by Varaaz Arts @ Art houz, 2023 . Participated in the art show “ Symphony of circles” curated by Varaaz Arts @ Lalith Kala Academy, 2025



HARMONY & BALANCE

Artist: Jayasri Suresh

Medium: Mixed media on paper

Size: 24x30 inches

Description: Nadopasana (worship through music) & Sacred geometry their interconnect and similarities for a common goal.

Secrets of Veena:

24 frets - 24 letters of Gayatri Mantra

4 strings above - 4 vedas

3 strings below - shrishti, sthithi, Laya

Human body in both Sthoola form & in subtle Nada form

Kindles the fire in kundalini that is curled up in Mooladhara . Only instruments containing universal code secrets to help reveal the ultimate to human beings.

Suitable Ambiance: Music and Arts schools, yoga centers, Practice room at home



DHANWANTARI GOD OF MEDICINE

Artist: Jayasri Suresh

Medium: Mixed media on paper

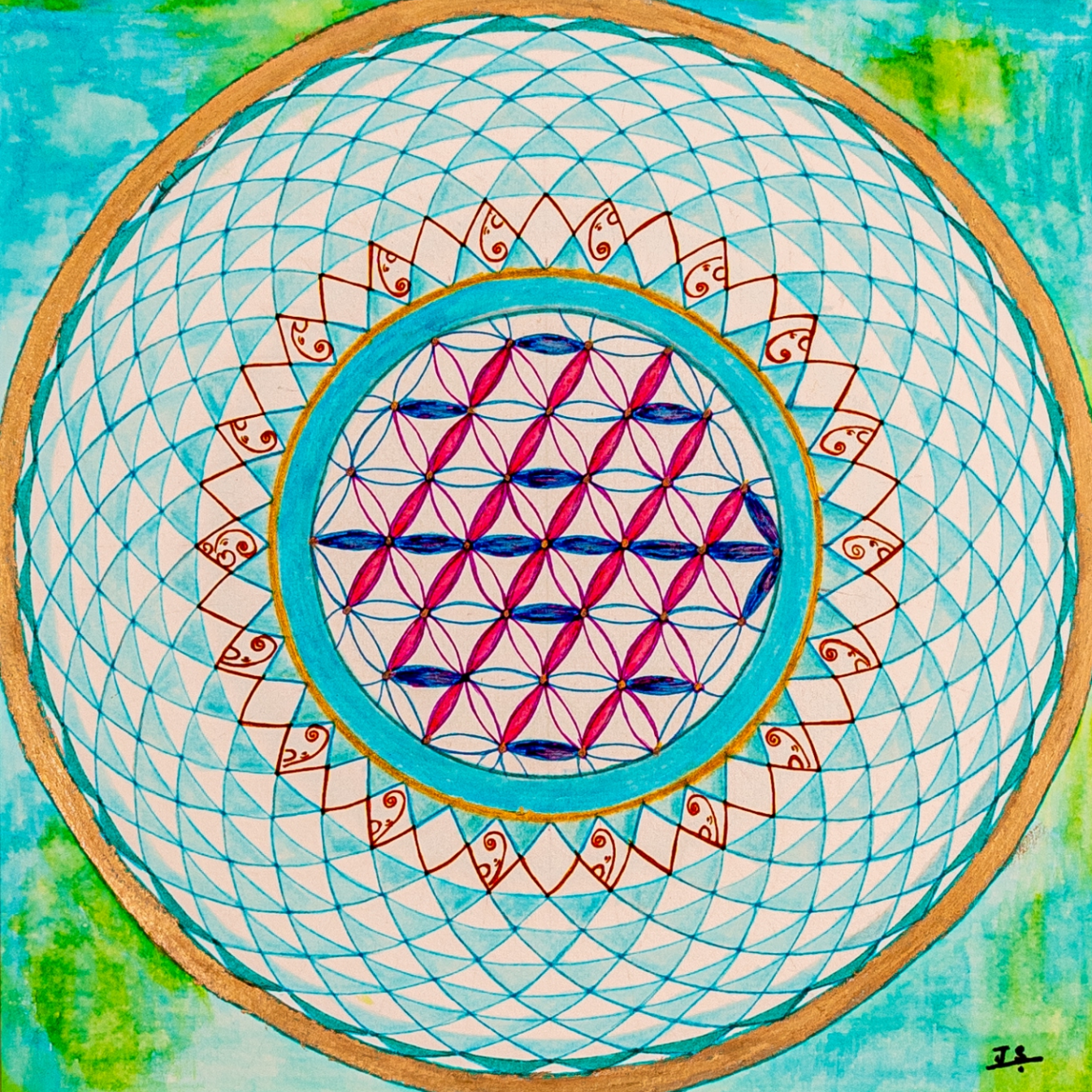
Size: 18 x 24 inch



Description: Conch - Depicts the rise of Lord Dhanwantari during the Samudra Manthan. Flower of life, the original blueprint for life, cosmic generator that supports and sustains all living beings. Releases powerful vibrational waves. Meditation on this is found to protect the energetic quality of self and environment. Used to energize water , food minerals & crystals.

Colour orange and green represent joy, renewal, growth and vitality. Gold and blue portray wisdom, illumination, trust and harmony.

Suitable Ambience: Prayer room, meditation centers, hospitals and clinics



SWAN IN THE QUANTUM

Artist: Jayasri Suresh

Medium: Acrylic on Canvas

Size: 2ft

Depiction:

Swan: Purity, Grace, Light evolution

Torus: Continuous flow, Energy, Interconnectedness.

Concentric Circles: Xenon Elemental



Suitable Ambiance: Ideal for spaces that encourage reflection and contemplation, yoga studios, or spaces dedicated to scientific exploration and discovery.



AN ODE TO PURITY

Artist: Jayasri Suresh

Medium: Tanjore Art on Canvas

Size: 2ft x 2ft

Depiction: The central void, surrounded by vibrant patterns and a spectrum of colors, signifies the infinite potential of the universe.

Suitable Ambiance: It adds a vibrant yet calming presence, connecting viewers to both their energetic and peaceful states.



Suitable Ambience:
Home, prayer room,
meditation and
yoga centres.

CLARITY

Artist: Jayasri Suresh

Medium: Gouache on Paper

Size: 15 X 15 inches

Depiction: 5 Pointed Star enclosed within a circle is a symbol used in spiritual traditions. Balance and Harmony of 5 elements, each point represents the 5 elements. Circle denotes the unity & infinite nature of energy. Shares a common thread with 'Panchakshari Mantra'. Emphasizes the importance of balancing the elemental forces that constitute the Universe and our existence.

Meditation on this helps to realize the beauty of Self and leads to Divine intention.



Suitable Ambiance: Prayer room & Meditation Centres

DIVINE UNION

Artist: Jayasri Suresh

Dimensions: 15X15 inches

Medium: Mixed media on paper

Depiction: Mahasivarathri - wedding of the material with the spiritual divine.

Represents the upsurge of energy in a human being - indicated by the upward triangles. Colours like Brown, Blue/ grey and green are used to portray the material world, spiritual and infinite, and growth respectively.



FIND DIVINE ORDER

Artist: Jayasri Suresh

Dimensions: 15X15 inches

Medium: Mixed media on paper

Description: Meditating on this diffuses the ego leading to the realization of oneness with the Divine and all Creation.

Suitable Ambiance: Prayer room, Meditation centres



ARUNACHALAM SANCTUARY

for Meditation & Self discovery

Artist: Jayasri Suresh

Dimensions: 15X15 inches

Medium: Mixed media on paper

Depiction: Meditating on this diffuses the ego leading to the realization of oneness with the Divine and all Creation. Colours used are Orange / yellow representing Arunam (Fire), Blue / Grey representing Achalam (mountain)

Suitable Ambience: Prayer room, Meditation Centres

The most “natural and transformative’ method that I know of far expanding perception is (without a doubt) to draw geometry by hand.

- Robert Edward Grant

ABOUT THE ARTIST

RAMYA RAVINDRAN - ARTIST

As an engineer, artist, and art therapist, my work bridges technical precision, emotional expression, and therapeutic healing. My engineering background provides a foundation of structure in my art-making, while my art therapy practice allows me to explore the intersection of science, spirituality, and culture through creative expression.

Raised in a culturally and spiritually rich environment, I have always been fascinated by the deep connection between humanity and the natural world. This perspective shapes my belief that life's essence is rooted in these interwoven relationships.

This integration of engineering and therapy led me to study mandalas and sacred geometry with Varaz Arts, a course that significantly influenced my artistic evolution. It allowed me to blend the precision and balance of engineering with the spiritual depth and cultural richness that inform my art.

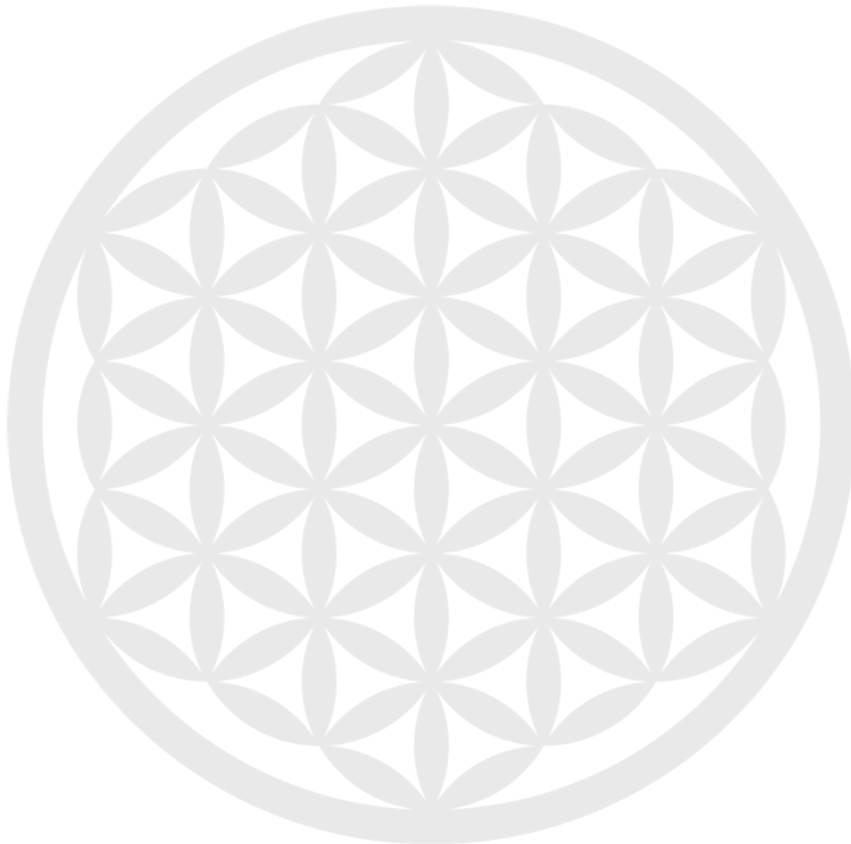
My art reflects the interconnectedness of nature, culture, science, and spirituality. Drawing from my cultural heritage, I incorporate sacred geometry, spiritual symbolism, and ecological wisdom, merging these influences with modern scientific principles to craft art that engages both the intellect and the emotions.



Certifications: Diploma in Art Therapy, Diploma in Fine Arts, Basic and Advanced Level Sacred Geometry Mandala Art

Art Shows: Spirit of Art (2016, 2017, 2018, 2019): In association with Gallery Muse'em, IPArts Academy, Gurugram

Participated in the art show **“Symphony of Circles”** curated by Varcaaz Arts @ Lalith Kala Academy, 2025





GURU - THE ETERNAL PILLAR OF LIFE

Artist: Ramya Ravindran

Dimension: 24x24 inches

Medium : Acrylic on Canvas

Depiction: A visual representation of the profound teachings of the Guru ashtakam (by Adi Shankaracharya), symbolizing the Guru as the eternal source of wisdom and enlightenment. The central tree of life, rooted in a blue lotus, signifies spiritual growth, purity, and awakening nurtured by the Guru's guidance. Surrounding symbols illustrate the interconnected virtues of knowledge, devotion, abundance, and liberation, radiating outward in a golden aura of divine energy and introspection. The mandala encapsulates the harmony of the physical and spiritual realms, inviting viewers to reflect on the transformative power of the Guru's blessings.

Colour palette Gold: Represents divine radiance, enlightenment, and the sacred wisdom, **Blue:** Symbolizes purity, communication, spiritual awakening, and the ultimate truth, **Green:** Reflects growth, vitality, and nurturing, **Subtle Browns and Earthy Tones:** Grounding energy, signifying stability, rootedness, and connection to the natural world, **Soft Pinks and Whites:** Denote devotion, grace, and unconditional love.

Suitable ambience: spaces of meditation, prayer, or learning, this artwork creates an ambience of serenity, introspection, and spiritual elevation.



Suitable Ambience:
Study or Office,
Living Room or
Entryway, Meditation
or Yoga Space.

Medium: Mixed media on water colour sheet, **Size:** A3

A JOURNEY OF EVOLUTION

Artist: Ramya Ravindran

Description: Symbolizes the interconnected evolution of life, represented through the intricate interplay of sacred geometry and the vibrant hues of creation. The two detailed fish, inspired by Madhubani art, evoke the fluidity of life, adaptability, and spiritual abundance, representing the primordial connection to water, the source of life on Earth.



Suitable Ambience:
Temple or Prayer
Room, Meditation
and Healing Spaces,
Cultural or Art
Centres.

Medium: Mixed media on water colour sheet, **Size:** A2

INTERWOVEN COSMOS: The flower of Life, the Torus, and the Dasavatara

Artist: Ramya Ravindran

It is a profound synthesis of sacred geometry, cosmic energy, and Indian mythology depicted in Warli art. Scientifically, this concept can be compared to evolutionary theory, where life progresses through stages beginning with simpler forms and advancing toward more complex forms.

ABOUT THE ARTIST

BHAVNA MURALIDHAR

My artistic process is a meditative journey. I begin by envisioning the energy and intention I wish to imbue into the mandala. Each line, each curve, is a deliberate act of creation, a reflection of the cosmic order.

I explore the world of traditional mandala art and sacred geometry patterns, experimenting instinctively with various art mediums. Over the years I have developed various concepts and am very drawn to the concept of Balance within self. My signature mandalas dominate the concept of the balance of Masculine and Feminine forces within us. I depict my version of evolution of my inner self through this self-exploratory art.





Artist: Bhavna

THE DIVINE TRILOGY

Kalpavriksha, platonic Solids & the flower of life combined are more than just geometric shapes in the galaxy. They together depict generosity, abundance, and spiritual enlightenment. They are seen as metaphors for the fundamental structures of the universe, reflecting the interconnectedness of all things in the web of life that permeates the universe, echoing natural structures like the cellular structure and molecular patterns. Incorporating this symbol in the design of homes and buildings can enhance positive energies and bring prosperity.

Suitable Ambience: Living rooms, Spiritual retreats, meditative centres and yoga studios.



NEBULA DAWN

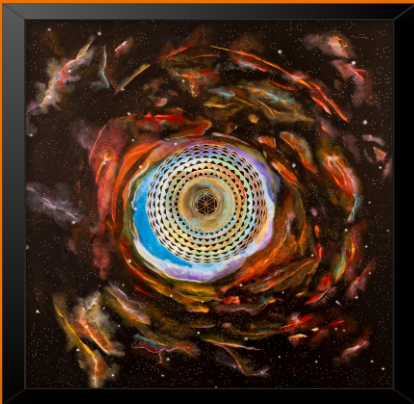
Artist: Bhavna

Medium: Acrylic on Canvas

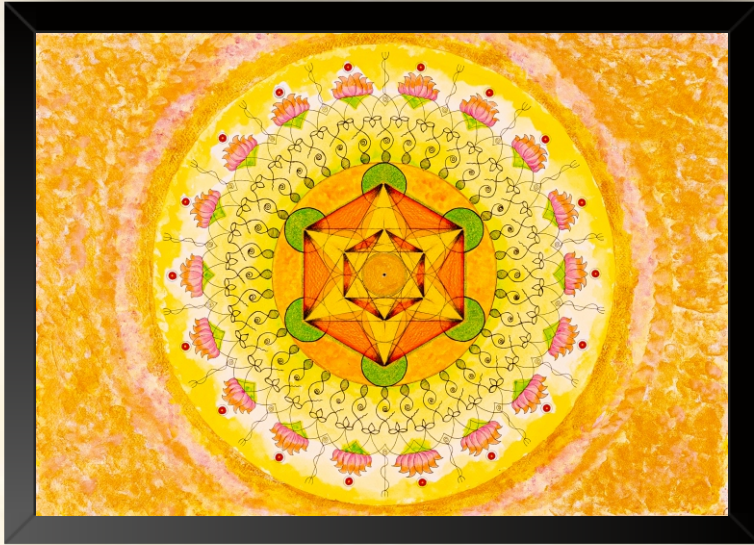
Size: 44x44 inches

Depiction: Representing this sacred geometry art in the helix nebula also referred as the Eye of God. comes from its striking visual appearance – a central, glowing ring surrounded by a fainter halo, resembling an eye. It's formed by a dying star. The painting depicts the language of the cosmic. Energies emerging from the germ of life in a torus. The sheer beauty and complexity of the Helix Nebula can inspire awe and wonder, prompting contemplation on the vastness of the universe and our place within it.

Colours : Warm Colours, Central Focal Point has cool Colours to balance the energies radiating outside.



Suitable Ambience: Meditation and healing Centres, Spacious Living Rooms & Yoga Studios



ECHOES OF LUMINESCENCE

Artist: Bhavna

Medium: Mixed media on Water Colour Sheet

Size: A2 / 17 x 24 inch

Depiction: This Painting Depicts the Metatrons cube representing the underlying structure and order of the universe along with the lotus representing the journey towards enlightenment. Just as the lotus rises above muddy waters to bloom, individuals can rise above worldly challenges to achieve spiritual awakening, symbolizing creation and the ever-renewing cycle of life.

Suitable Ambience: Spaces that inspire contemplation & clarity, creativity and meditation.



PANCHA TATVA

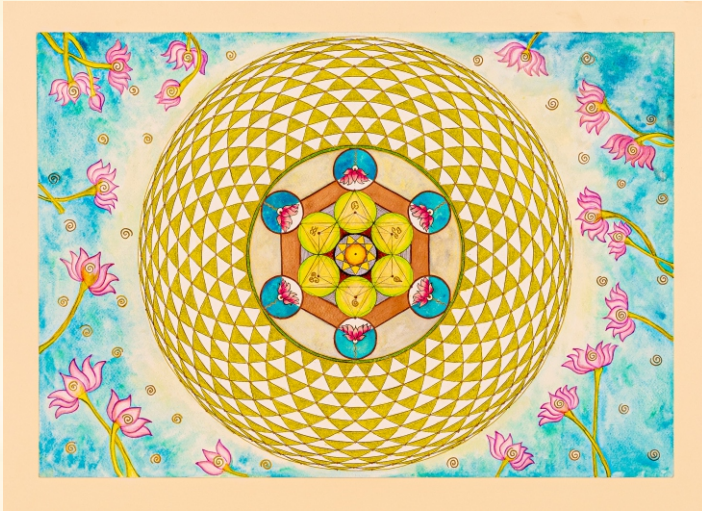
Medium: Gouache on Paper

Size: 15 X 15 inches

Description: The combination of Pancha Lingam , Torus and the five Pointed Star emanates a powerful vibration of continuous cycle of energy flow creating Dynamic Equilibrium. This Painting Depicts the Five Lingas in the pancha bootha sthalams that are dedicated to Shiva.

Suitable Ambience : Prayer rooms, meditative and art work centres as it emanates high energy vibrations.

Artist: Bhavna



Suitable Ambience :
Spaces that inspire
creativity, meditation
& Healing centres.

LOTUS LUSTRE

Artist: Bhavna

Medium: Mixed Media on Water Colour Sheet

Size: A2 / 17* 24 Inch

Depiction: The representation of Lotus in the Metratron's Cube enclosed in a torus depicts that these geometric patterns represent the underlying order and harmony of the cosmos. Lotus represent the energy centres in the body, while the torus emphasizes on the human energy field through the chakra system. The 13 circles and interconnecting lines represent the structure of the universe, emphasizing the interconnectedness of all things. It's seen as a symbol of potential and the power of manifestation as it contains the blueprints for all forms.

SAMYAVASTHA

Artist: Bhavna

Medium: Mixed Media on canvas

Size: A2 / 17* 24 Inches

Depiction: This Painting represents a state of balance between opposing forces creating Equanimity. the Flower of Life is also viewed as a representation of the cycle of life, death and rebirth and the symbol of the divine union of the sacred masculine and sacred feminine, the force of creation on earth. Conceptual dualities delve into the trickier aspects of human emotions and feelings.



Suitable Ambience :
Spaces that inspire
creativity, meditation
& Healing centres.

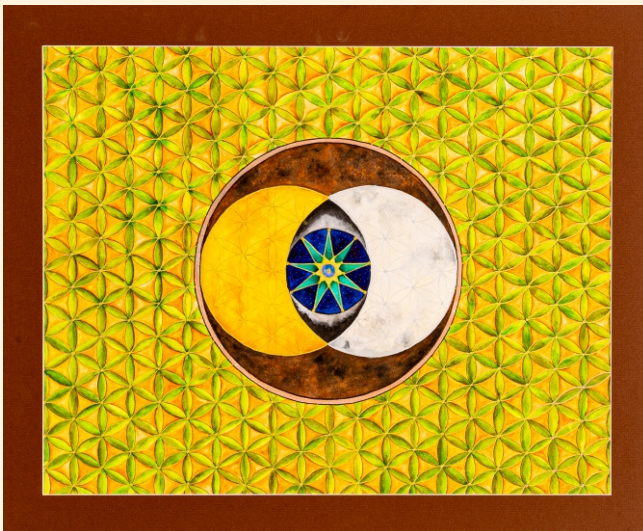
TRINITY MATRIX

Artist: Bhavna

Medium: Water colour sheet

Size: A2 / 17 x 24 inches

Depiction: The Flower of Life is built upon another symbol within Sacred Geometry, the Vesica Piscis. The Vesica Piscis, with the union of two perfect circles, contains the intelligence of the Universe - its divine blueprint and the polarity of life. Just like the music composer weaves each note into a whole that is pleasing to the ear, the artist has masterfully combined each stroke to create a beautiful picture, comprehending that we are all part of a whole will create harmony in the world and we each have a part to play. we recognise the divinity of creation within ourselves and within others.



The Colours emanate a sense of fulfilment and enriching experience

Suitable Ambience : Spaces that inspire, healing centres, Mental health & Emotional Well being Centres.



ASTRAL FUSION

Artist: Bhavna

Medium: Water Colours on 300 Gsm

Size: A2 / 17 x 24 inches

Depiction: The Fusion of Metatron Cube Evolving from the Flower of life resonates high frequency vibrations creating ripples of interconnectedness from atoms to galaxies, strands of your DNA to the patterns found in snowflakes. This gives you a glimpse at the architecture of creation. It is the blueprint for all sacred Geometry Patterns including the platonic Solids.

Suitable Ambience : Spaces that inspire contemplation , creativity and meditation healing centres.



Water Colour Sheet
Size: A2 / 17* 24 Inch

BLOOM FROM COMMOTION OF EMOTIONS

Artist: Bhavna

Medium : Oil & Acrylic on canvas
Size : 30 inches by 30 inches

Depiction: The beginning of a spiritual journey is a jumble of alien emotions the centre amongst an illusion of calm blue in the center. With constant perseverance, they settle down and the spiritual growth starts from within Lotus. This painting depicts spirituality arising from handling various emotions.

Best Ambience : Large living room spaces, Yoga , meditation, emotional well-being centres, spaces which spark creativity and inspire contemplation.



AVISHKARANA

Artist: Bhavna

Medium: Acrylic on Canvas

Size: 44x44 inches

Depiction: The Kalpavriksha enhances positive energy flow & is a symbol of spiritual and material abundance. It represents the potential within each individual to manifest their desires and achieve their highest aspirations. This Combined with the Metatron cube creates a strong tool for manifestation. This painting represents embarking on a journey of inner peace while embracing the external Chaos

Colours : Green – Signifies Growth, Red for Power and Energy, Gold to evoke the Celestial Significance of Kalpavriksha.

Suitable Ambience: Meditation Centres, Living Rooms at East or North East Corner to attract Abundance.

Suitable Ambience : Living rooms, Spiritual retreats, meditative centres and yoga studios.

Drawing geometric shapes and patterns can bring focus and awareness to the present moment, helping to cultivate mindfulness.

ABOUT THE ARTIST

SAI SAMEERA

My name is Sai Sameera, and I'm a 5th grader from Sullurupeta. I'm really passionate about art and crafts, and I love experimenting with different techniques. I'm always trying new things and learning new skills. I'm excited to share my work with you today!

I've been creating art for as long as I can remember. I love the feeling of bringing my ideas to life on paper or canvas. I'm always looking for new ways to express myself creatively. I hope you enjoy my work as much as I enjoyed creating it!



I've recently been exploring mandala art, and I'm fascinated by the intricate patterns and designs. It's a great way to relax and focus, and I've learned so much about symmetry and balance. I'd love to invite you to join me on my journey with mandala art. Participated in the art show **“Symphony of Circles”** curated by Varaaz Arts @ Lalith Kala Academy, 2025



COSMIC STELLAR

Artist: Sai Sameera

Medium: Water Colours on watercolour sheet

Size: A2 / 17 x 24 inches

Description: Represents the life force, the universal energy that sustains all creation, distilled from the heart of the cosmos. It is a celebration of both the mystery and the beauty of the universe, illustrating the energetic principles that guide the cosmos in a visual form. It connects the individual with the vast expanse of existence, reminding us that we are all part of this sacred dance of energy, matter, and consciousness.



Pranava
12

GALAXY ELIXIR

Medium: Watercolours on watercolour Sheet

Size: A2

Artist: Sai Sameera

Depiction: Represents the life force, the universal energy that sustains all creation, distilled from the heart of the cosmos. It is a celebration of both the mystery and the beauty of the universe, illustrating the energetic principles that guide the cosmos in a visual form. It connects the individual with the vast expanse of existence, reminding us that we are all part of this sacred dance of energy, matter, and consciousness.



Suitable Ambience: Meditation and healing Centres, Spacious Living Rooms & Yoga Studios

ABOUT THE ARTIST

VINON VANDUYN

From a young age, I've always been a creative person. My passion for art shaped how I view the world, and that creativity has been a driving force in everything I do. While I pursued a degree in engineering, my love for art and design never faded.

As an Alchemist I integrate a profound understanding of the Alchemy Method, allowing me to weave symbols, geometry, and energy into my paintings. With a journey spanning four years, I have cultivated a unique artistic voice that blends ancient techniques.

My focus lies in the meticulous study and creation of geometric patterns, imbued with spiritual significance. With an expert knowledge of alchemical symbolism, I incorporate elements of transformation and spiritual alchemy into my creations, imbuing each artwork with transformative energy.



Drawing inspiration from the Kerala Mural tradition, my work features vivid colours and spiritual motifs, bringing an ancient art form into the modern world.

Certifications:

- Basic Level in Masters in Alchemy Astral projection and dream yoga
- Ancient method of bhavachakra
- Basic Level Sacred Geometry Mandala Art & Advanced Level Sacred Geometry Mandala Art

Notable Achievements:

- Private Commissions: I have worked on exclusive, commissioned pieces for private clients, with my work widely appreciated for its depth, precision, and spiritual resonance.
- International Wonder Book of Records: I am honoured to have been selected for recognition by the International Wonder Book of Records for creating the largest Sacred Geometry Mandala.
- Presented in the art show **“Symphony of Circles”** curated by Varaz Arts @ Lalith Kala Academy, 2025





SACRED GENESIS

Medium: Mixed Media on Canvas
Size : 2ft x 2ft

Artist: Vinon Vanduyn

Depiction: In this vision, the painting depicts the moment when creation begins, where the convergence of two circles forms the Vesica Pisces — a shape that is often seen as a doorway to higher realms. This intersection is not just geometrically beautiful, but also metaphorically rich. It's the place where duality becomes unity, where the masculine and feminine, light and dark, or conscious and unconscious energies meet to give birth to new life.



Best Ambience: Hospitals, and
Clinics



ALCHEMY OF PROSPERITY : YING AND YANG

Artist: Vinon Vanduyn

Medium: Poster colours & Acrylic on canvas

Size: 14 x 14 inches

Depiction: A sophisticated, minimalist exploration of alchemy, prosperity, and the balance of day and night using only white, gold, and black as its color palette. The piece is not only visually striking but also deeply symbolic, blending elements of traditional Chinese philosophy with the mystical processes of transformation found in alchemy.

The interplay of these colors and symbols will emphasize harmony, balance, and the cyclic nature of life and abundance. On the right side of the Yin-Yang symbol, white represents day and growth. It can be accentuated with gold rays or highlights, emphasizing illumination and the energy of the sun. On the left side, black represents the night, the source of yin energy, and the receptive, transformative qualities of darkness. Gold will swirl through the black area, symbolizing the alchemy of potential

Best Ambience : This work would exude a sense of calm, contemplation, and transformation, making it an ideal piece for spaces where balance, growth, and prosperity are highly valued, such as in a home office, living room, or meditation space. It would serve as a constant reminder that true prosperity comes from balance—between light and dark, action and rest, giving and receiving.



TRIMARGA - 3 PATHS OF LIFE

Artist: Vinon Vanduyn

Medium: Acrylic on Canvas

Size: 2ft x 3ft

Depiction: This artwork is a profound fusion of geometry, art, and spirituality, designed to inspire introspection and balance in life.

This mesmerizing artwork masterfully integrates Sacred Geometry and spiritual philosophy. At its center, a triangle represents balance and unity, embodying the three spiritual paths— Karma Yoga, Jnana Yoga and Bhakti Yoga —that guide an individual to inner journey to reach the Paramaatma. Surrounding the triangle, a vibrant pentagon signifies protection and the integration of the five elements: earth, water, fire, air, and ether.

The silhouette of Krishna and Arjuna on a chariot just before the battle of Kurukshetra , inspired by the Bhagavad Gita (Chapter 2 verse 47, Chapter4 verse 41 and Chapter 12 verse 20 , reflects the eternal truths of karma yoga , Jnana Yoga and Bhakti Yoga

Ambience: yoga studios, Meditation centres, Drawing room

Best Ambience : Yoga studios, Meditation centres, Drawing room

Our Entire Biological System, The Brain And The Earth Itself Work On The Same Frequencies.

Nikola Tesla



Artist: Vinon Vanduyn

Medium: Acrylic colors fluid art on canvas

Size: 2ft x 2ft

Philosopher's Stone and Sun God's Alchemical Gift

Depiction : A mesmerizing fluid painting captures a deeply symbolic and dynamic moment in alchemical lore, blending the power of the Sun God, the mystical Philosopher's Stone, and the radiant energy that flows toward a single recipient. The combination of alchemy, sacred geometry, and the fluid painting technique convey both cosmic energy and spiritual transformation. The Sun God acts as the central divine source of light, life, and power, while the Philosopher's Stone serves as the ultimate symbol of spiritual mastery and transmutation. As the energy of the Sun God pours into the recipient, it symbolizes the transmutation of base material into gold, both literally and metaphorically. The fluid nature of the painting suggests a constant state of flux—not a static energy but one that is in a perpetual state of transformation.



DIMENSIONS OF CONTRAST

Artist: Vinon Vanduyn

Medium: Acrylic on Canvas

Size: 2 ft x 2 ft

Depiction : This monochromatic geometric piece explores the interplay of symmetry, depth, and perspective. At its core lies a hypnotic checkerboard sphere, representing balance and duality, surrounded by intricate linear patterns symbolizing fluidity and continuity. The bold black and white striped border amplifies the visual impact, creating a striking contrast that draws the viewer's gaze inward. This artwork evokes a sense of movement and dimensionality, blending minimalism with complexity.

DIGITAL PRESENCE & EVENT ORGANIZER



VRULEIN
DIGITAL SOLUTIONS

THANK YOU SPONSORSHIP PARTNERS



THANK YOU MAGAZINE PARTNER

PROVOKE

THANK YOU STRATEGY PARTNER



THANK YOU GIFT PARTNERS

